

CAHIER DES PLANS

PHOCÉA MARSEILLE

PHOCÉA

Plan masse



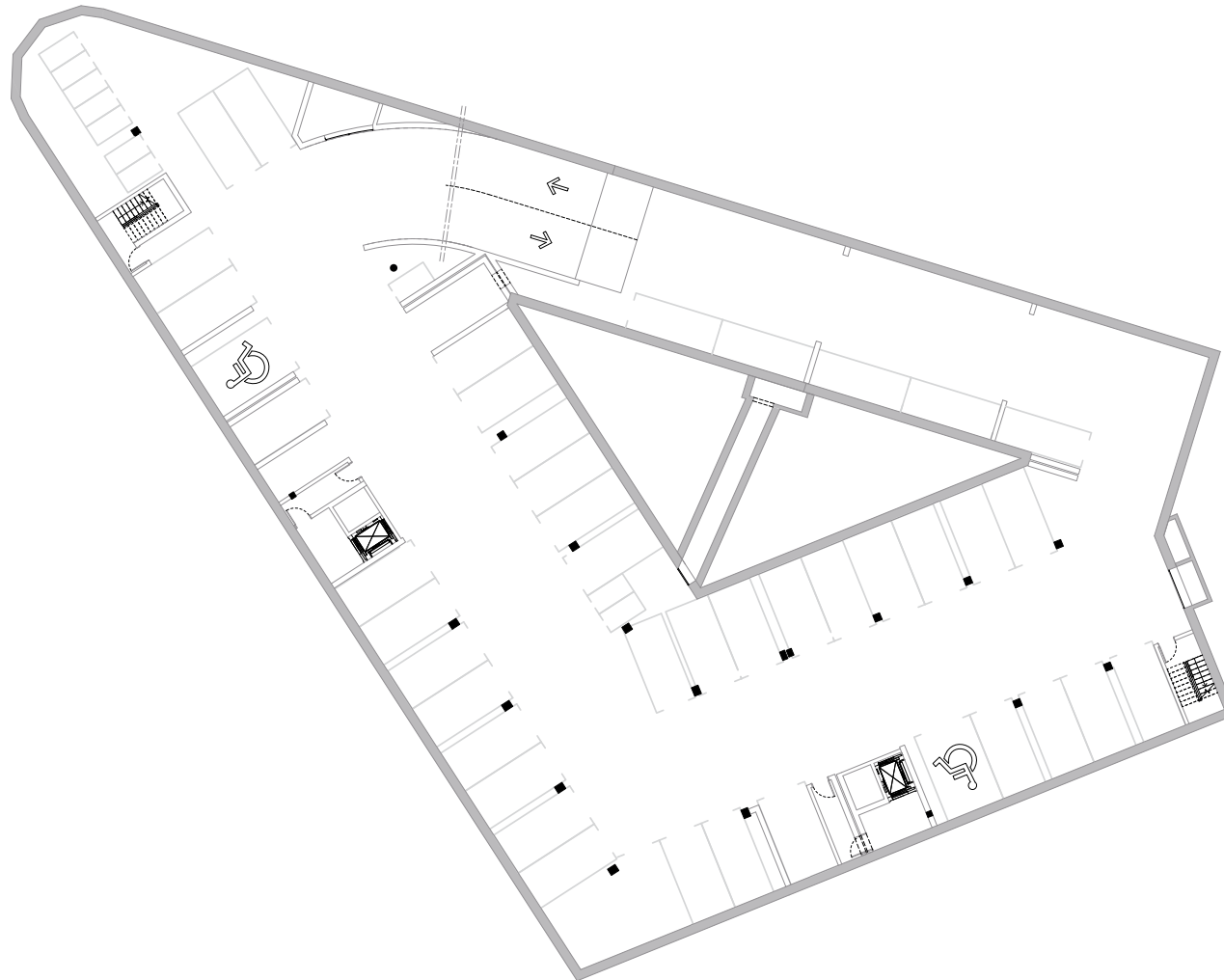
PHOCÉA
Élévation
Rue Lesseps



PHOCÉA

Niveau : R-2

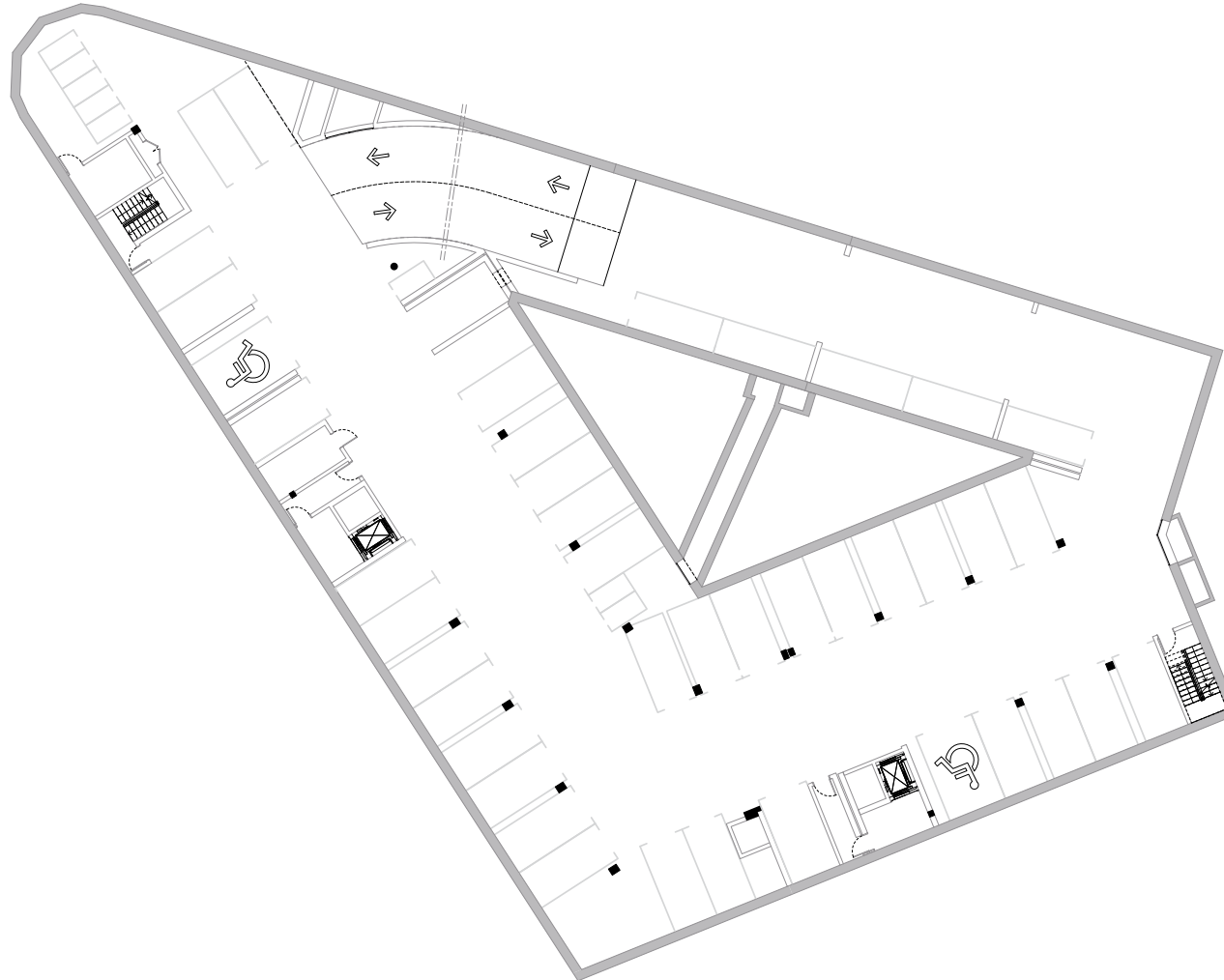
43 places de parking en intérieur



PHOCÉA

Niveau : R-1

42 places de parking en intérieur



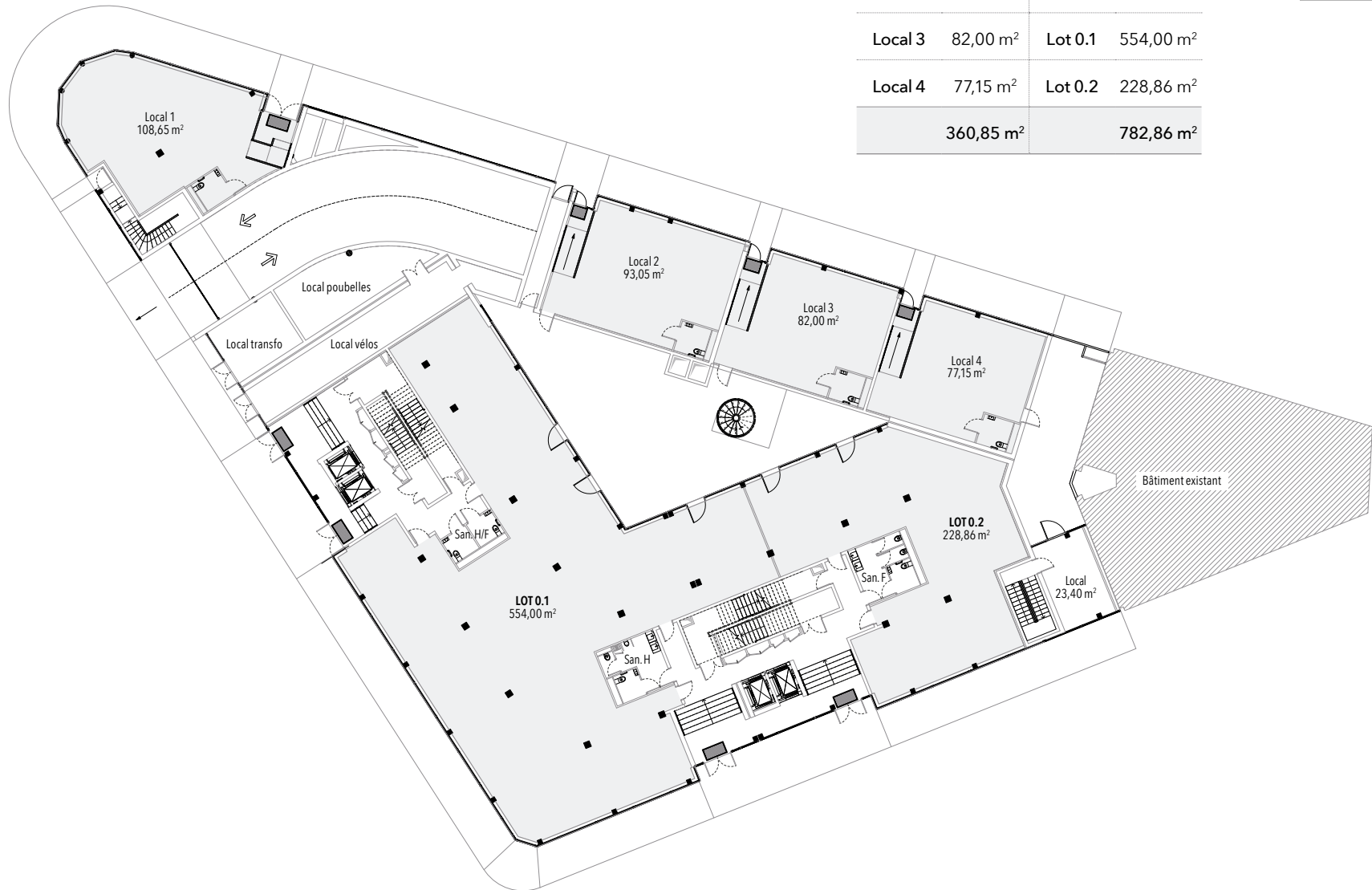
PHOCÉA

Rez-de-chaussée

Surface totale commerces et bureaux : 1.143,71 m²



Surface commerces		Surface bureaux	
Local 1	108,65 m ²		
Local 2	93,05 m ²		
Local 3	82,00 m ²	Lot 0.1	554,00 m ²
Local 4	77,15 m ²	Lot 0.2	228,86 m ²
	360,85 m ²		782,86 m ²

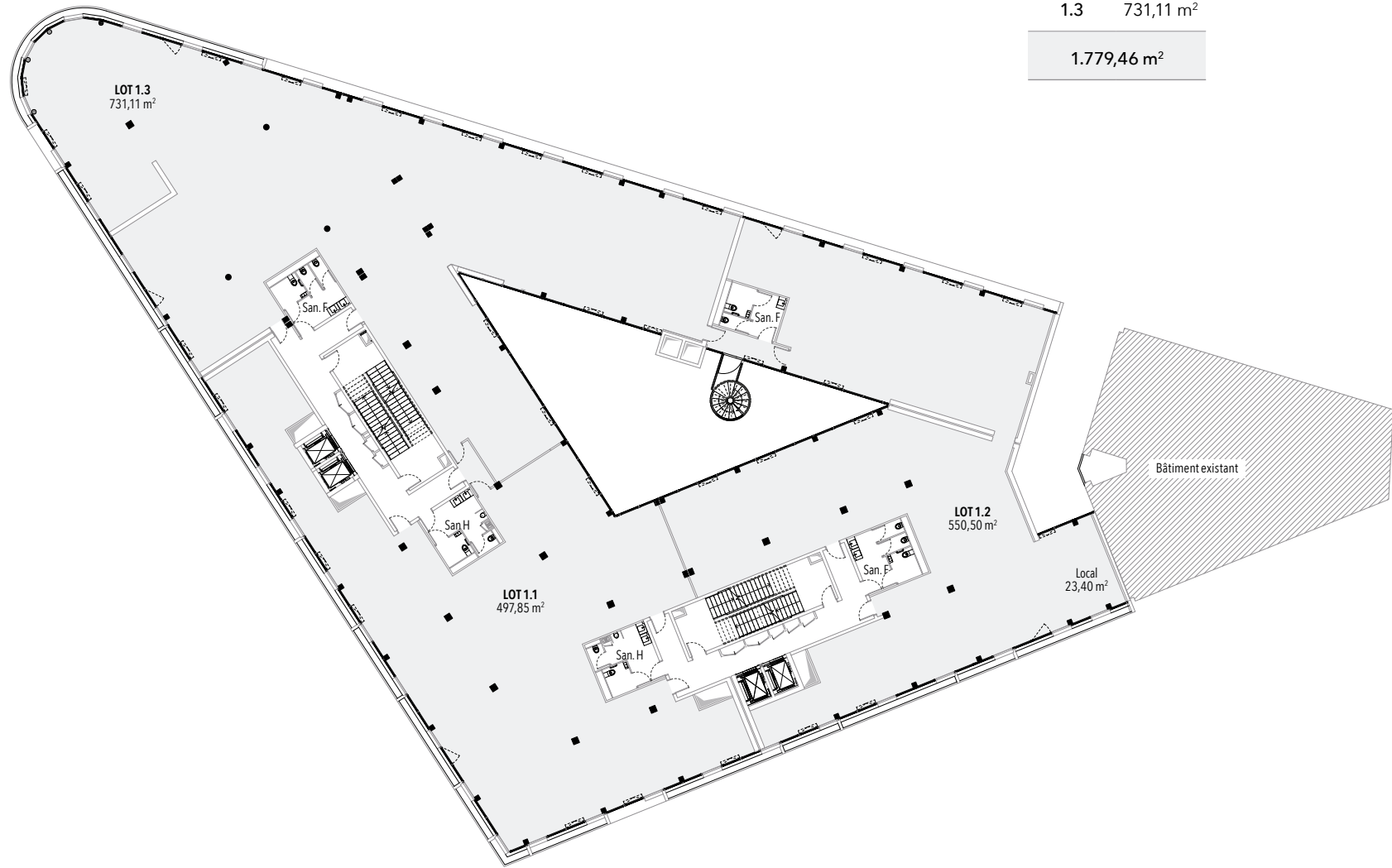


PHOCÉA

Niveau : R+1

Surface totale : 1.779,46 m²

Surface R+1	
1.1	497,85 m ²
1.2	550,50 m ²
1.3	731,11 m ²
1.779,46 m ²	

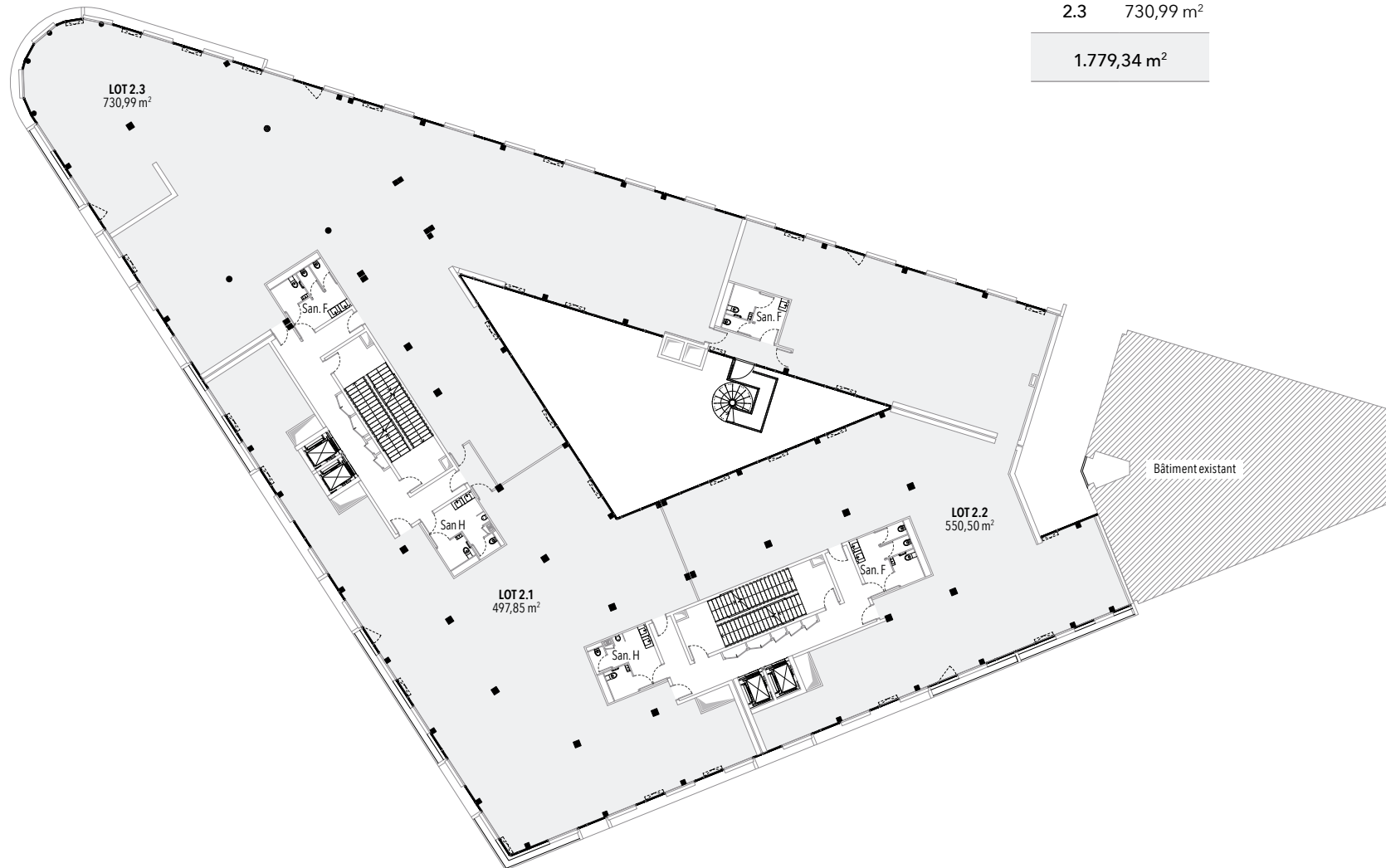


PHOCÉA

Niveau : R+2

Surface totale : 1.779,34 m²

Surface R+2	
2.1	497,85 m ²
2.2	550,50 m ²
2.3	730,99 m ²
1.779,34 m ²	



PHOCÉA

Niveau : R+3

Surface totale : 1.364,58 m²

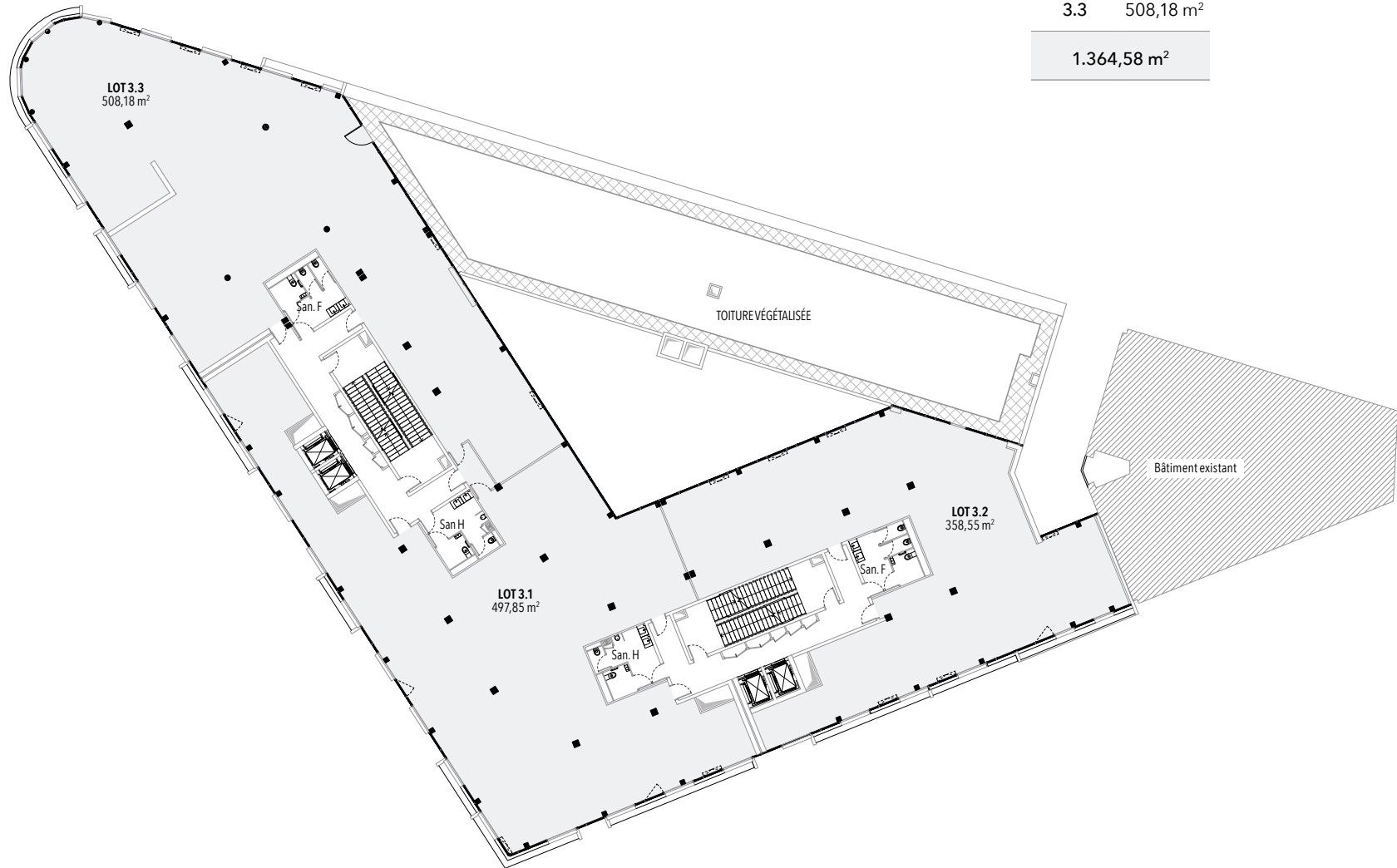
Surface R+3

3.1 497,85 m²

3.2 358,55 m²

3.3 508,18 m²

1.364,58 m²

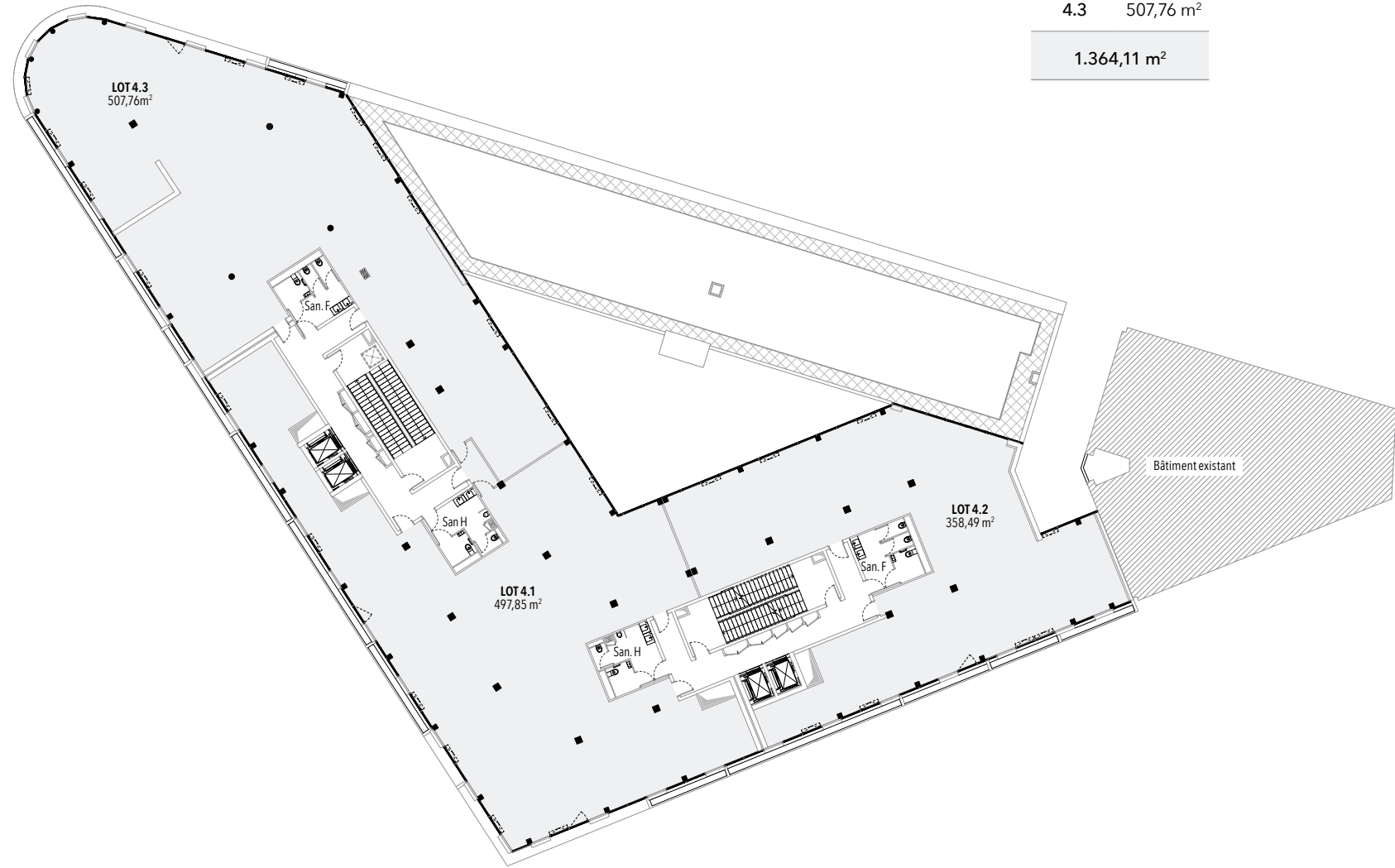


PHOCÉA

Niveau : R+4

Surface totale : 1.364,11 m²

Surface R+4	
4.1	497,85 m ²
4.2	358,49 m ²
4.3	507,76 m ²
1.364,11 m ²	

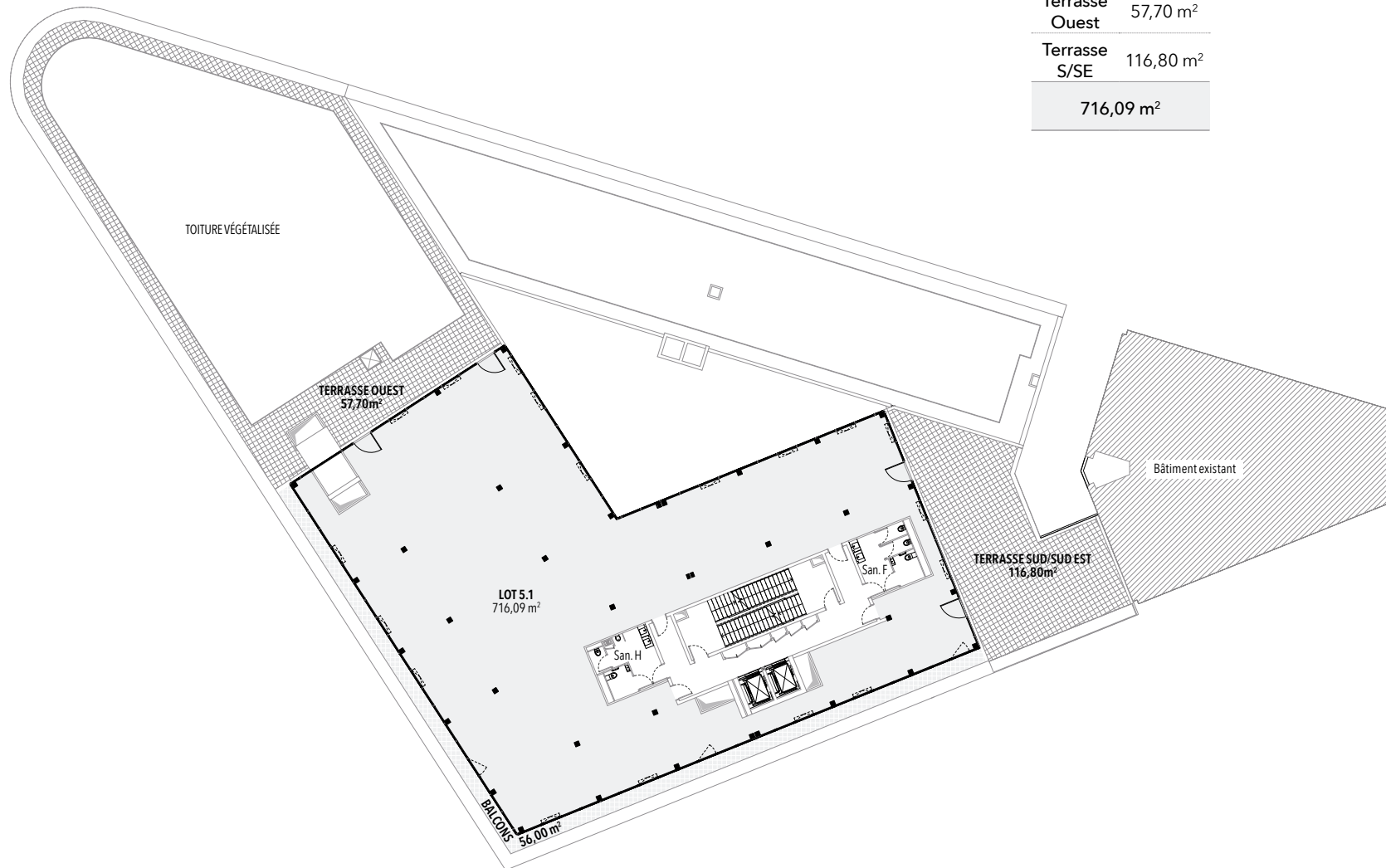


PHOCÉA

Niveau R+5

Surface totale : 716,09 m²

Surface R+5	
5.1	716,09 m ²
Balcons	56,00 m ²
Terrasse Ouest	57,70 m ²
Terrasse S/SE	116,80 m ²
716,09 m ²	



PHOCÉA

Niveau R+6

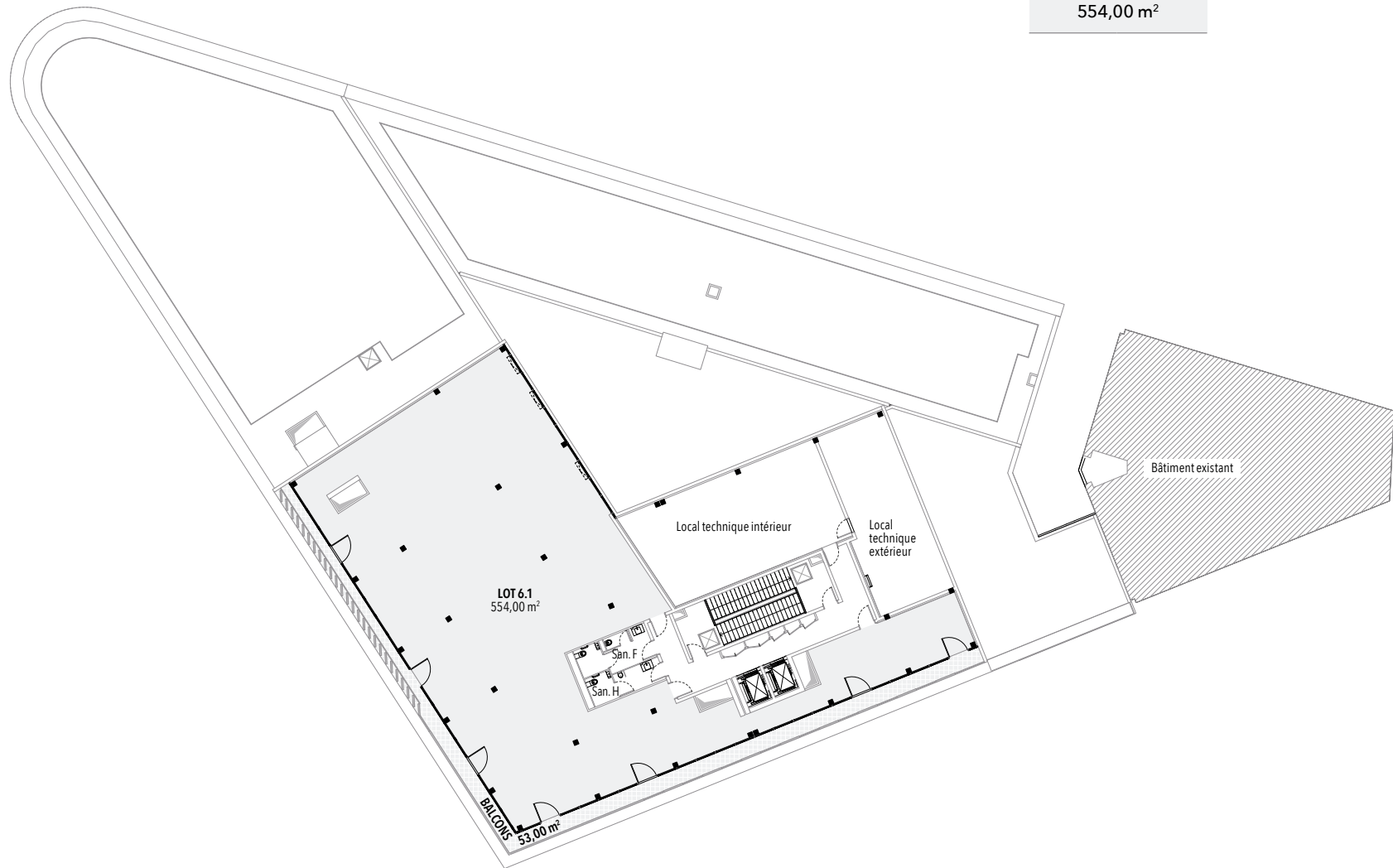
Surface totale : 554,00 m²

Surface R+6

6.1 554,00 m²

Balcons 53,00 m²

554,00 m²





S.A. AU CAPITAL DE 281.506.400 €

SIÈGE

16, PLACE VENDÔME
75001 PARIS
T. +33 (0)1 44 55 07 07

BUREAU RÉGIONAL

DIRECTION RÉGIONALE
GRAND SUD
LES DOCKS - ATRIUM 10.6
ESPACE PROVENCE
10, PLACE DE LA JOLIETTE
13002 MARSEILLE
T. +33(0)4 91 13 45 29

WWW.LAZARD-SA.COM